

Our surface-mounted range of wall lights is an ideal choice for a variety of outdoor lighting applications. Designed to illuminate the area in front of it, these luminaires are also perfect for creating light accents on vertical surfaces. These luminaires offer enhanced, long-lasting protection against the ingress of dust, moisture, and insects.

Product Description

- Luminaire made of spun aluminium and extruded aluminium (grade 6063).
- Non yellowing UV stabilized translucent polycarbonate diffuser.
- Pressure die-cast aluminium mounting base for easy installation onto the wall.
- Surface mounting on wall using hardware after connecting to the power supply.
- Cable entries for through-wiring of mains supply cable.
- Prewired with E27 holder and suitable for operating on 240V, 50Hz single phase ac supply.

Product Benefits

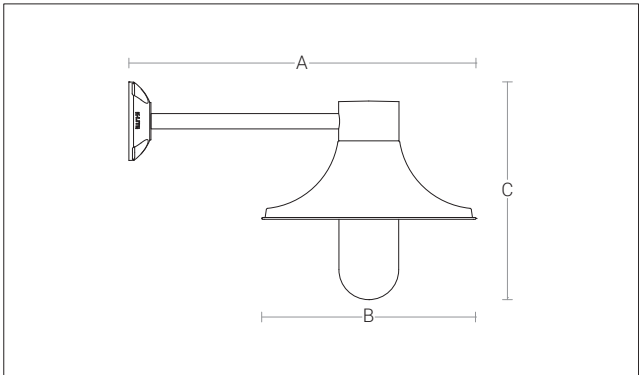
- Corrosion resistant and Maintenance free.
- Quick & simple installation.
- Functionally versatile, strong and stable.

Area of Application

Residential, Building facade, Commercial centres, Passages, Pathways.

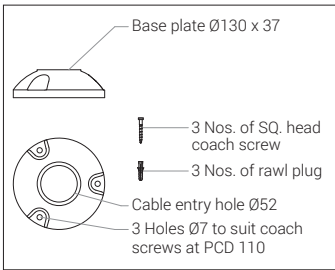
Available Finish

Pure polyester powder coated  
RAL 9004 Black  
RAL 9007 Grey aluminium  
RAL 7016 Anthracite grey  
Graphite grey



ID	Holder	A	B	C
24463	E27-C	575	Ø355	361

Max. Wattage : 17W LED / 23W CFLE



**Note :** It is our constant endeavor to upgrade the performance of our products. For the latest technical information, IES files and product updates please refer to the website at [www.klite.in](http://www.klite.in)